



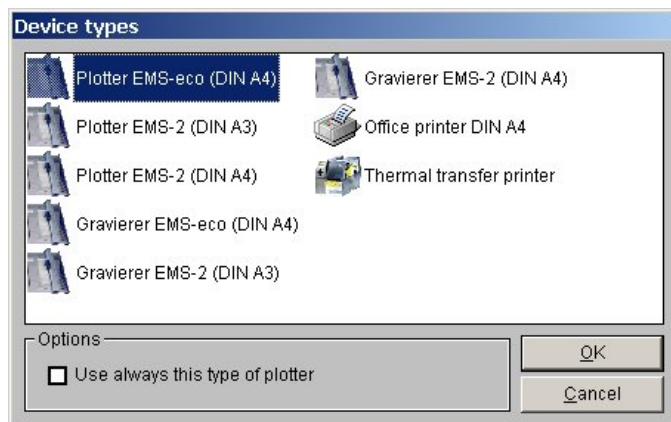
Brief instruction
Labeling software CONTA Sign CS 5.0

© Version: July 8, 2010

Brief instruction on how to use the labeling software

1. Choosing the labeling or engraving device

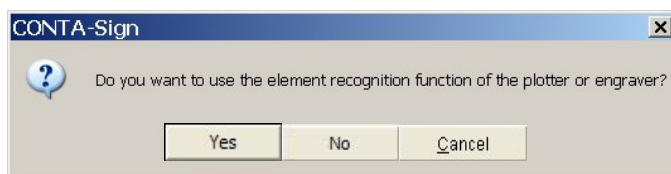
From the menu bar, select **"File> New project"**. The window to select the labeling or engraving device opens. When you have chosen and confirmed the relevant output device, the program provides you with a list of all labeling element manufacturers for the output device used.



When you have chosen the plotter or engraver and the respective device is switched on and connected to your PC via the USB cable, you can preselect the labeling elements.

In this instance, the message appears.

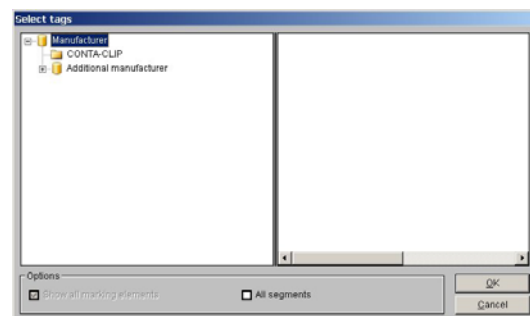
"Do you want to use the element recognition function of the plotter or engraver?"



If you confirm by answering **"Yes"**, the software imports the IDs of the support plates fitted from the plotter and only provides you with the manufacturers of the labeling elements that can be printed or engraved on the support plates used.

2. Select the labeling element

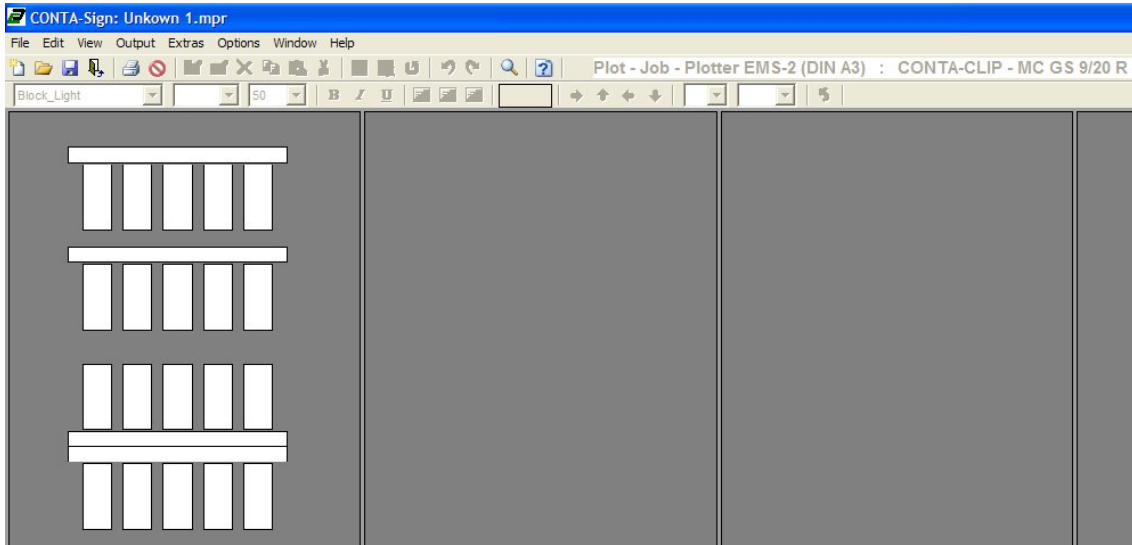
Click on the relevant manufacturer to select the labeling element required. It is then displayed on screen.



If you have switched on element recognition for the plotter or engraver, the individual segments will be displayed on screen. Double-click on the segment required. This displays only the manufacturers of labeling elements that can be used with the support plate fitted.

Double-click to select the manufacturer and then the element to be printed. The relevant template appears on screen.

The menu bar displays the following information:



- Plot job > Output to plotter
- Engraving job > Output to engraving device
- Print job > Output to office or thermo transfer printer

Which output device was selected

Which labeling element was selected

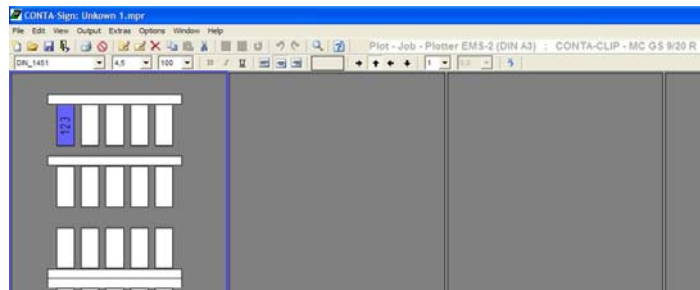
3. Labeling elements

You can choose from a variety of options to label tags or labels.

Label straight onto the tag

Click on the tag to be labeled. The tag is selected and the toolbar appears for selecting the font style, font size, etc.

You can change the settings and enter the labeling text.

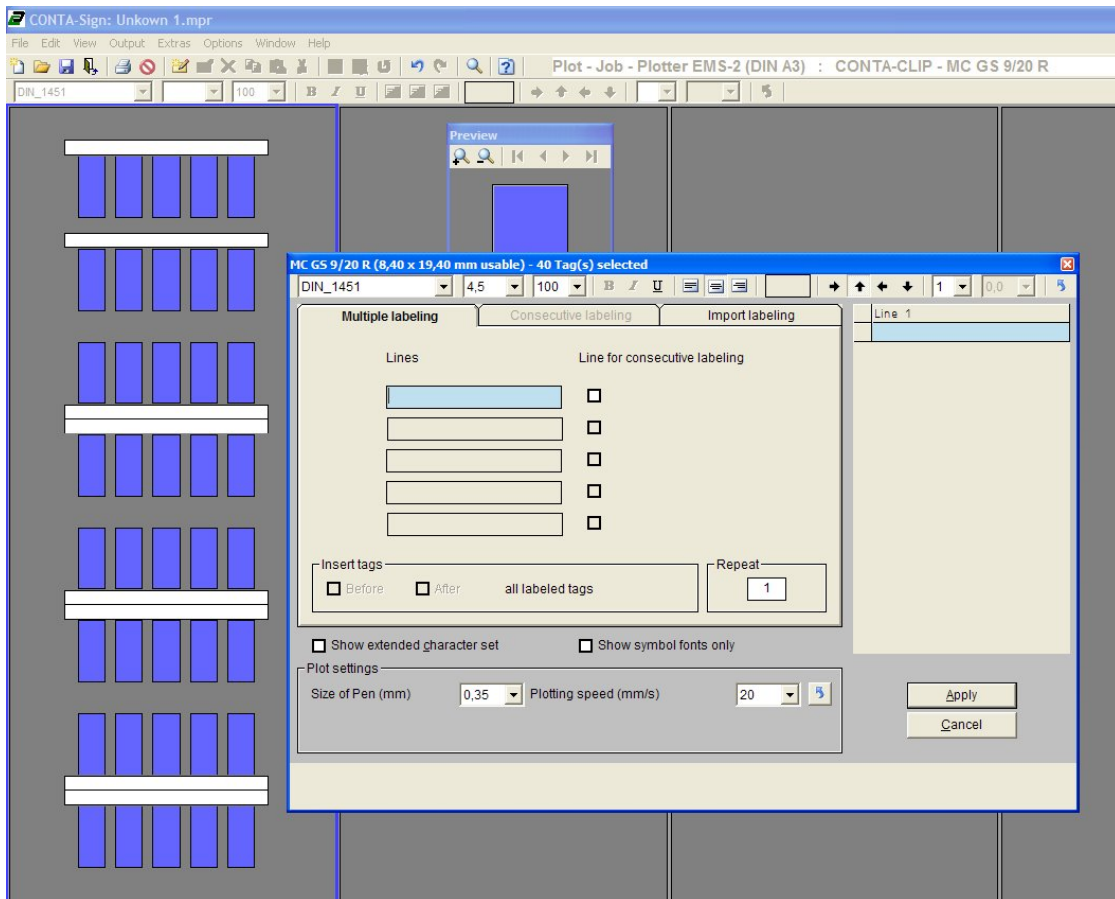


When you have labeled individual tags, you can copy, insert, delete, cut or remove tags as well as add new tags. In order to select and process tags, take the mouse to the tag that you want to work on. You can access the action you require by right-clicking with the mouse on the drop-down menu. Editing options are based on Excel.

Extended input of labeling data

If you wish to create multiple labels or consecutive labeling, or if you want to import data from Excel or text files, double-click on the tag where labeling should begin.

A window subsequently opens enabling you to use the extended input options to create labeling data.



4. Output of labeling data to the output device

When you have entered all labeling data, click on the printer icon in the toolbar. The window for the relevant output device appears. You can then use this to enter all the settings you require.